

**Bring Technology to Life**



**Tianlong Science and Technology**  
Mail: inquiry@medtl.com  
Phone: 86 029 82682132  
Website: www.medtl.net  
Address: No. 4266 Shanglin Road, Xi'an, China

April 8, 2024 / Version 1.0

**Bring Technology to Life**



# **Panall 8000**

## **All-in-one Molecular Diagnosis System**


Embrace flexibility with **open system** to create broad molecular test menu




Tianlong Panall 8000 All-in-one Molecular Diagnosis System is a simple and secure molecular diagnosis system that integrates the functions of sample tube decapping/capping, sample loading, nucleic acid extraction, PCR setup, PCR detection and result analysis, which can realize a true sample in -result out detection process and bring great convenience for professionals with only one-key operation.

Panall 8000 is designed as an open platform that is compatible with molecular diagnostic tests from different manufacturers. Tianlong intends to collaborate with best-in-class IVD assay developers to bring new tests to the Panall 8000 All-in-one Molecular Diagnosis System for a broad range of disease categories.

## COMPATIBLE CONSUMABLES

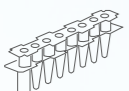


**Specialized sample tube**



**Specialized nucleic acid extraction kit**

\*Tianlong can customize nucleic acid extraction reagents to match your PCR detection needs



**Specialized nucleic acid detection kit**

\*Open system for PCR protocol and compatible with PCR reagents from different manufacturers



Sample in -result out system

## TEST PORTFOLIO

Tianlong offers an extensive menu of tests on the system covering respiratory infections, sexually transmitted infections, and gastrointestinal infections. Tianlong also offers customized reagents for the Panall 8000 All-in-one Molecular Diagnosis System that enables labs to program user-defined PCR analysis protocols and streamline their PCR tests.



## OPEN SYSTEM

Tianlong Panall 8000 is an open system that enables laboratories to program user-defined PCR analysis protocols. Laboratories can use user-defined protocols in addition to those developed by Tianlong. The simple and efficient design of the Tianlong Panall 8000 allows you to test a wide range of sample types and meet emerging diagnostic requirements through customized reagents. Tianlong intends to work with our partners to bring more new tests to the Panall 8000 for detection of a broad range of disease categories.



**Compatible with PCR reagents from different manufacturers**

Empty PCR tubes work with your PCR reagents





**Customize collaboration mode for a more diversified menu**

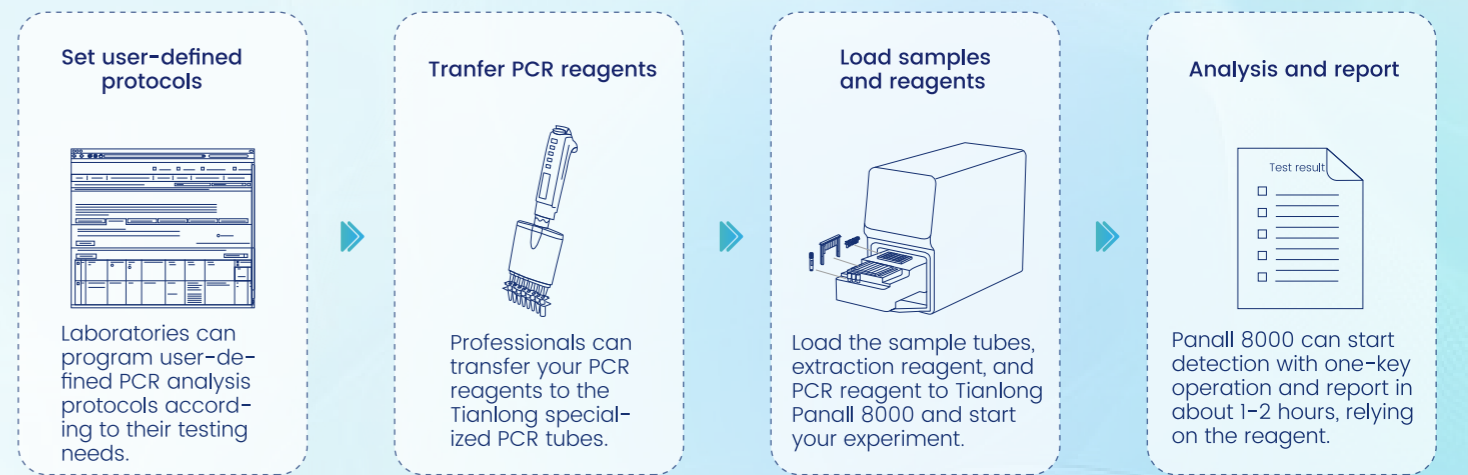
Tianlong will collaborate with our partners to jointly expand the testing menu. Tianlong can customize nucleic acid extraction reagents to match your PCR reagents for more business possibilities.



**Available for more application scenarios**

An open system with a diversified testing menu can meet your emerging diagnostic requirements and apply in more scenarios. Tianlong Panall 8000 compatible with your reagents can optimize the detection process with minimal hands-on time and make detection more efficient.

### The open system workflow on Tianlong Panall 8000



## APPLICATION AREA



# ATTACHED FILE

## SOP for setting your PCR protocol in panall 8000 open system

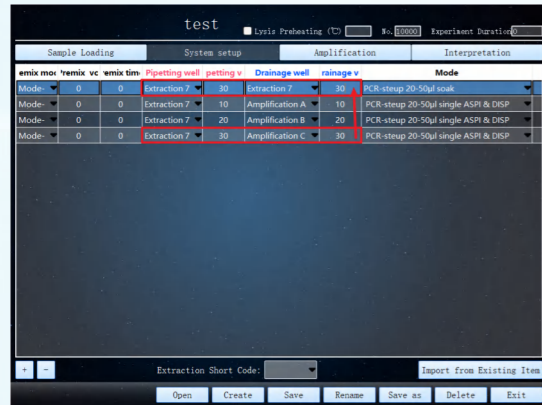
### 1 Start setting

Login in superadmin mode. Choose in turn Setting>Item Management>Item Edit



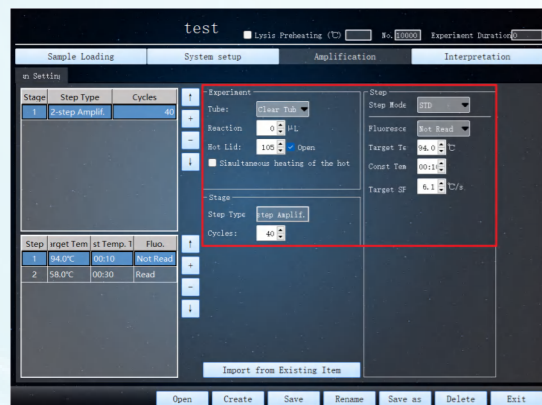
### 3 Sample loading and PCR system setup

Choose sample loading, mixing and dispensing mode and set parameters



### 5 Set PCR protocol

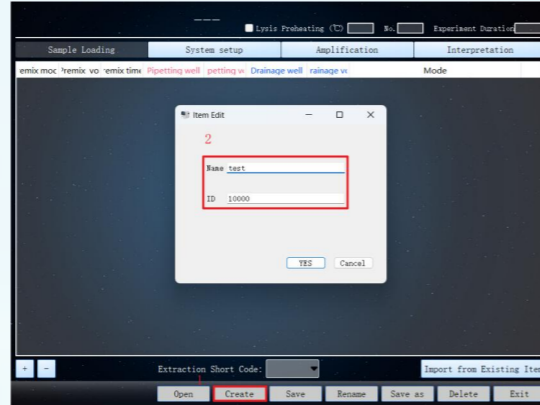
Choose the amplification method and set the amplification cycles and steps



\*After PCR protocol set up, user can save the protocol as a template, and start your new experiment quickly with pre-configured templates.

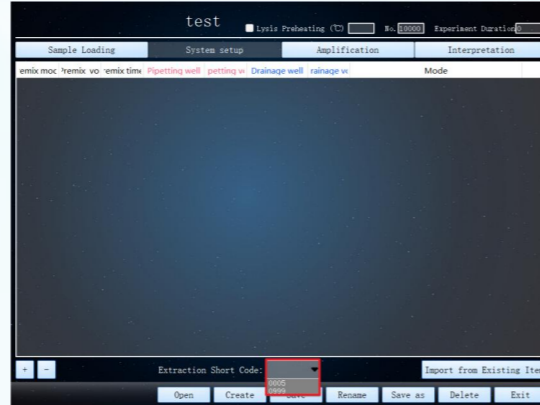
### 2 Set new experiment

Edit the new experiment name and ID



### 4 Choose extraction protocol

Choose the extraction reagent protocol according to your detection needs



### 6 Set target gene and internal control

Result analysis by independent gene interpretation or Joint gene interpretation



# PARAMETERS

Model	Panall 8000
Sample Throughput	1-8 samples at the same time
Pipetting Range	20µL ~250µL
Detection time	1~2 hours, relying on the reagent
Channel and Available Fluorescein	Channel 1: FAM, SYBR Green I, etc. Channel 2: VIC, HEX, TET, JOE, etc. Channel 3: ROX, Texas Red, etc. Channel 4: Cy5, etc.
Pipetting Performance	20µL ≤ V < 40µL: accuracy: A ≤ 5.0%, repeatability: CV ≤ 3.0% 40µL ≤ V < 100µL: accuracy: A ≤ 3.0%, repeatability: CV ≤ 1.5% V ≥ 100µL: accuracy: A ≤ 1.0%, repeatability: CV ≤ 1.0%
Extraction Heating Rate	Average heating rate: ≥ 1.5°C/s;
Extraction Temperature Accuracy	≤ 1.0°C
PCR Heating Rate	Average heating rate: ≥ 4.5°C/s Maximum heating rate: ≥ 6.1°C/s
PCR Cooling Rate	Average cooling rate: ≥ 3.5°C/s; Maximum cooling rate: ≥ 5.0°C/s.
PCR Temperature Accuracy	≤ 0.1°C
Sample Testing Linearity and Repeatability	Linear correlation: $r \geq 0.998$ Repeatability: CV ≤ 1.5%
Information Management	Sample information: with scanner inside, Panall 8000 can scan and record the sample information; Reagent information: visual system can automatically identify the kit information and run the corresponding program
Minimized Contamination	Directional exhaust & negative pressure system; HEPA filtration; UV disinfection; Shortest fixed path for sample operation
Data Storage	1000 experiment files can be stored
Language	Chinese and English
Power Supply and Power Consumption	AC 100~240V, 50/60Hz; 1200VA
Communication Specification	Internet Port: TCP/IP protocol, Ethernet connection USB Port: USB 2.0
Dimension	750mm(L) × 350mm (W) × 600mm (H)
Weight	80Kg